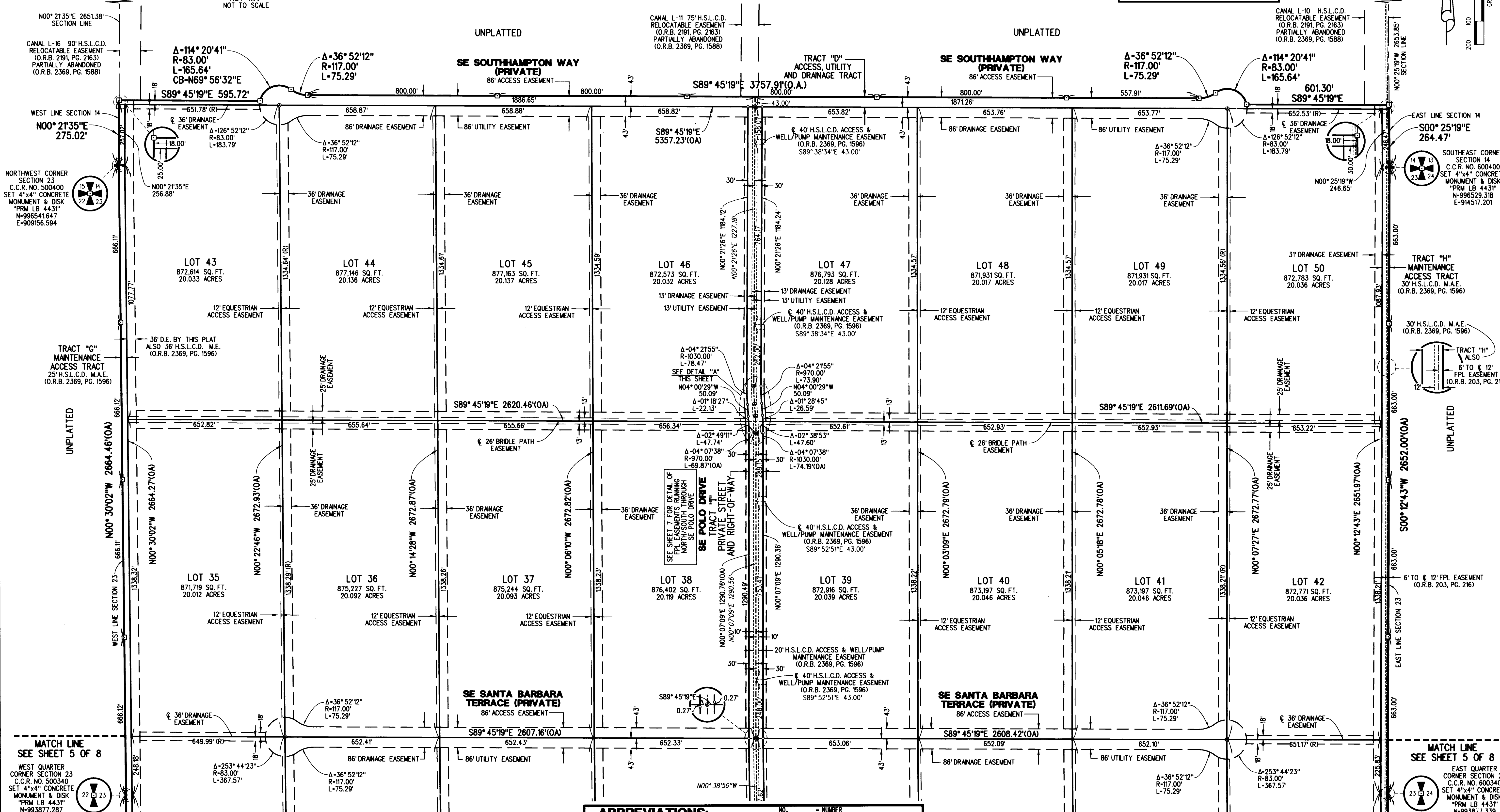
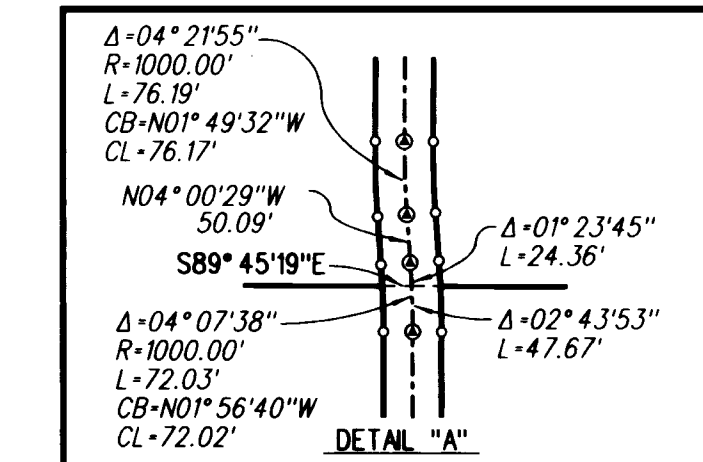
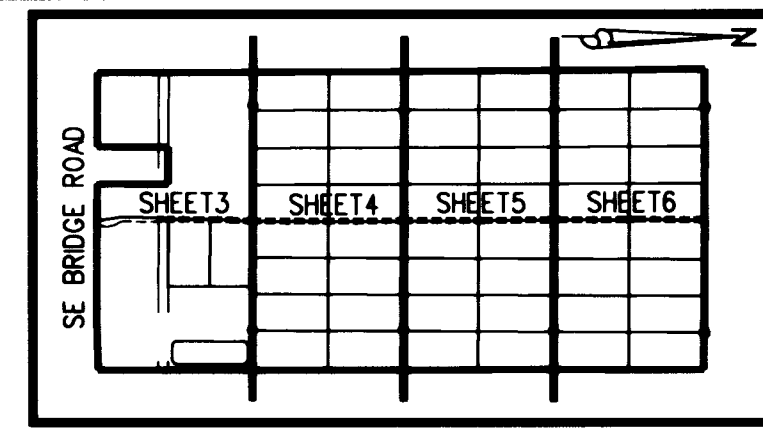


HOBE SOUND POLO CLUB

SITUATE IN SECTIONS 14, 23 AND 26, TOWNSHIP 39 SOUTH,
RANGE 41 EAST, MARTIN COUNTY, FLORIDA



SURVEYOR'S NOTES:

- A SET NAIL AND DISK STAMPED "PCP LB 4431" PERMANENT CONTROL POINT (P.C.P.), UNLESS OTHERWISE NOTED.
- A SET 4"x4" CONCRETE MONUMENT AND DISK STAMPED "PRM LB 4431" PERMANENT REFERENCE MONUMENT (P.R.M.), UNLESS OTHERWISE NOTED.

- BEARINGS SHOWN HEREON ARE REFERENCED TO THE SOUTH LINE OF SECTION 26, TOWNSHIP 39 SOUTH, RANGE 41 EAST AND SAID LINE BEARS NORTH 89°45'23" WEST.
- TO AVOID CONFUSION, SECTION LINES WITHIN THE PLAT BOUNDARY ARE NOT SHOWN ON MAP SHEETS 3 THROUGH 7. SEE MAP SHEET 8 FOR A DETAIL OF SAID SECTION LINES.

- LINES, WHICH INTERSECT CURVES, ARE NON-RADIAL UNLESS OTHERWISE NOTED.
- THIS PLAT, AS RECORDED IN ITS ORIGINAL FORM IN THE PUBLIC RECORDS, IS THE OFFICIAL DEPICTION OF THE SUBDIVIDED LANDS DESCRIBED HEREON AND WILL IN NO CIRCUMSTANCES BE SUPPLANTED IN AUTHORITY BY ANY OTHER FORM OF THE PLAT, WHETHER GRAPHIC OR DIGITAL.
 - THERE MAY BE ADDITIONAL RESTRICTIONS THAT ARE NOT RECORDED ON THIS PLAT THAT MAY BE FOUND IN THE PUBLIC RECORDS OF THIS COUNTY.
- THIS INSTRUMENT WAS PREPARED BY RICHARD JEROME WILKIE, P.S.M., IN AND FOR THE OFFICES OF LIDBERG LAND SURVEYING, INC., 675 WEST INDIANTOWN ROAD, SUITE 200, JUPITER, FLORIDA 33458. TELEPHONE (561) 746-8454.

ABBREVIATIONS:

NO.	= NUMBER
(OA)	= OVERALL
O.R.B.	= OFFICIAL RECORDS BOOK
PG.	= PAGE
P.O.B.	= POINT OF BEGINNING
P.O.C.	= POINT OF COMMENCEMENT
P.R.M.	= PERMANENT REFERENCE MONUMENT
(R)	= RADIAL
R.	= RADIUS
R.O.W.	= RIGHT OF WAY
SE	= SOUTHEAST
SQ. FT.	= SQUARE FEET
S.R.	= STATE ROAD
U.E.	= UTILITY EASEMENT
Δ	= DELTA ANGLE
CB	= CHORD BEARING
CL	= CHORD LENGTH
C.C.R.	= CERTIFIED CORNER RECORD
D.E.	= DRAINAGE EASEMENT
D.O.T.	= DEPARTMENT OF TRANSPORTATION
F.M.D.	= FOUND
F.P.L.	= FLORIDA POWER & LIGHT
H.S.L.C.D.	= HOBE-SOUND LUCIE CONSERVANCY DISTRICT
L.B.E.	= LANDSCAPE BUFFER EASEMENT
L.	= ARC LENGTH
M.A.E.	= MAINTENANCE ACCESS EASEMENT
M.E.	= MAINTENANCE EASEMENT

LIDBERG LAND SURVEYING, INC.

675 West Indiantown Road, Suite 200, Jupiter, Florida 33458 TEL. 561-746-8454

CAD.	KNUST \ BECKER \ 07-0218-306 \ 07-0218-306.DGN
REF.	
F.L.D.	A.M. & B.D.
OFF.	R.J.W.
CKD.	D.C.L.
FB.	561
PG.	21
DATE	11/21/08
JOB	07-0218-306
DATE	11/21/08
DWG.	D07-0218
SHEET	6 OF 8